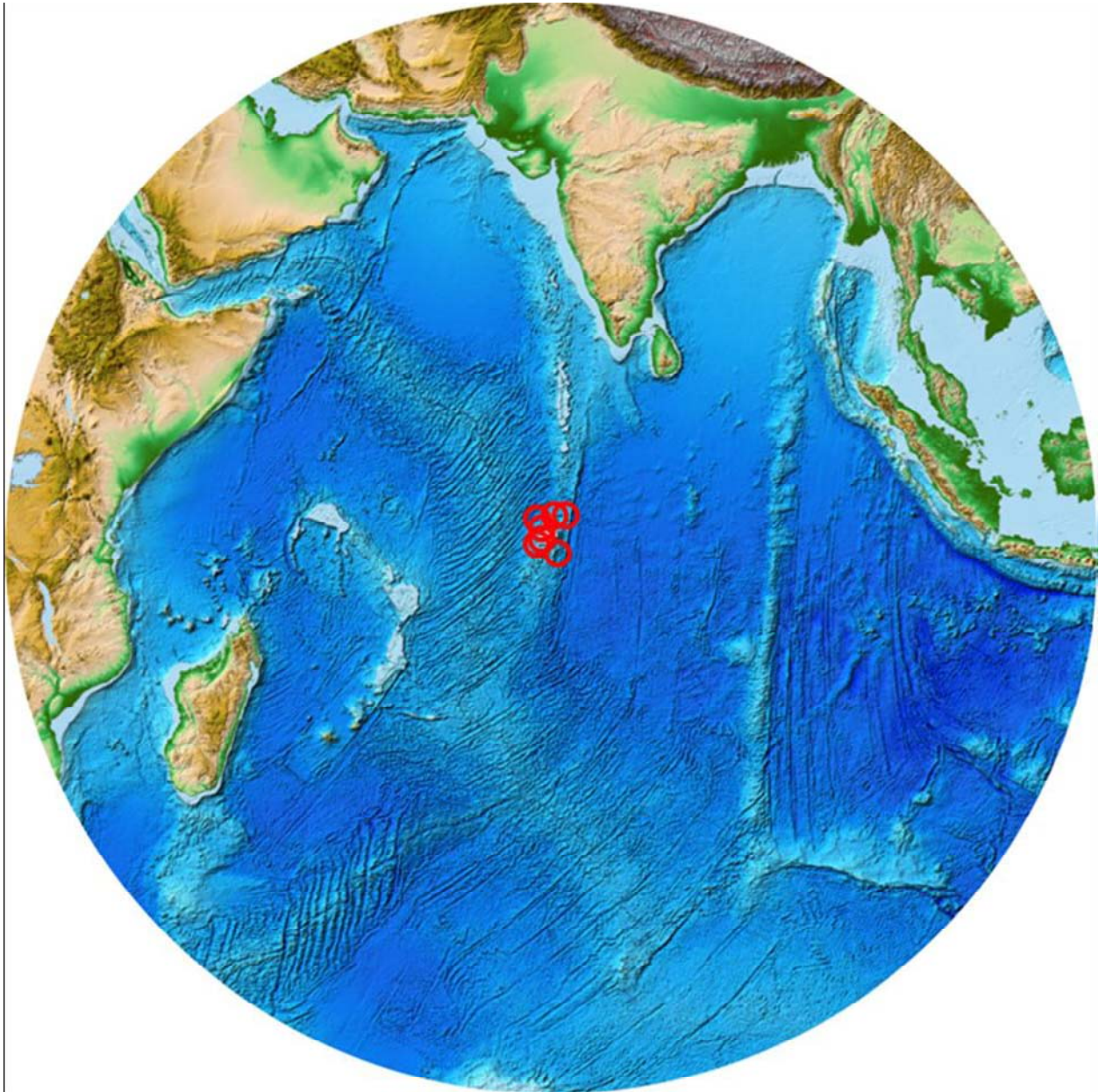


The following maps can all be found at:

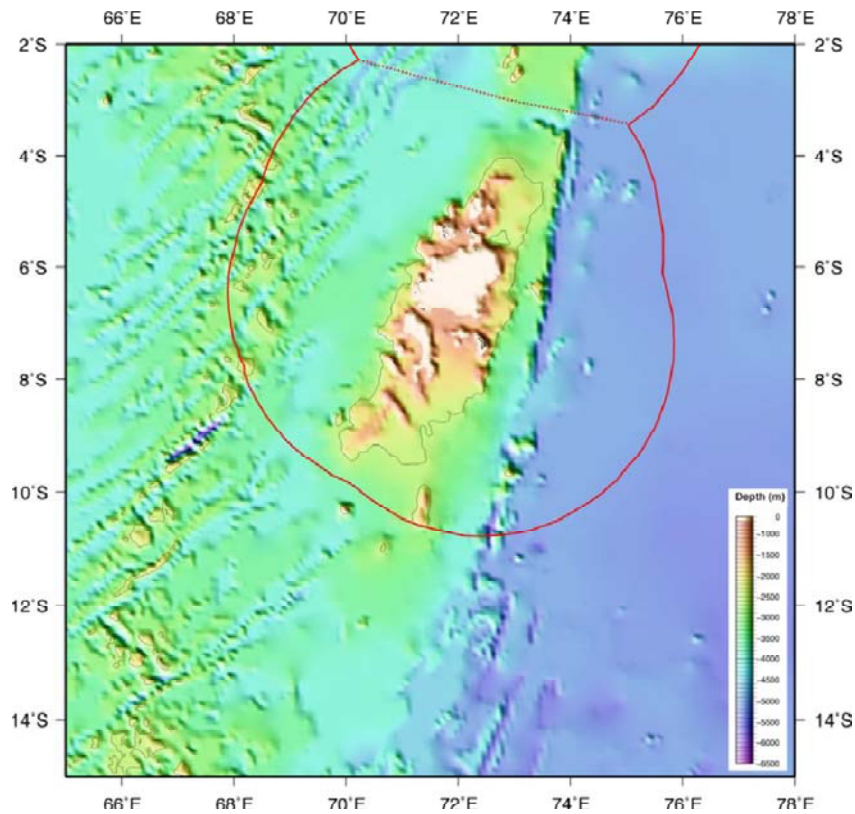
http://www.oceans2025.org/PDFs/SOFI%20Workshop%20Reports/SOFI_Workshop_Report_10_BIOT_09.pdf



The British Indian Ocean Territory (BIOT) is centrally-located in the Indian Ocean (larger BIOT islands circled). This position increases its conservation value as a ‘stepping stone’ re-seeding source and refuge for other localities.

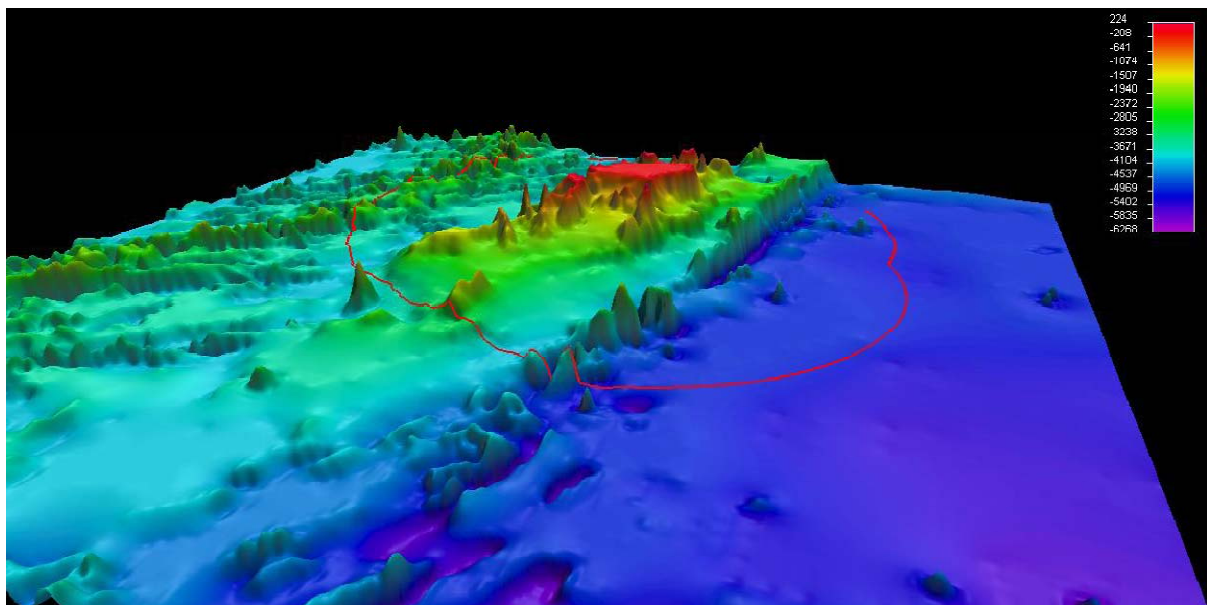
This figure is edited from NOAA ETOPO1 imagery. This is a 1 arc-minute global relief model of Earth's surface that integrates land topography and ocean bathymetry.

Amante, C. and B. W. Eakins, ETOPO1 1 Arc-Minute Global Relief Model: Procedures, Data Sources and Analysis. NOAA Technical Memorandum NESDIS NGDC-24, 19 pp, March 2009. It is understood that no permissions are required for non-commercial re-use.



Bathymetry around the British Indian Ocean Territory, mostly indirectly determined from satellite-derived sea height data. The boundary of the current Fisheries Conservation Management Zone (minimum potential EEZ) is shown, based on 200 nm limits.

(Image: National Oceanography Centre Southampton/ GEBCO www.gebco.net).



Bathymetry around the British Indian Ocean Territory, as above; 3D view from south-east. (Image: National Oceanography Centre Southampton/GEBCO www.gebco.net)